

# Powermax30® XP

## Duramax® LT hand torch consumables



Minimum order quantity		1	1	5	5	1	
Consumable type	Torch type	Shield/deflector	Retaining cap	Nozzle		Electrode	Swirl ring
Standard (15-30 A)	Hand	420116	420114	420118		420120	420211
Quantity in kit		2 (1 each)	1	4	3	7	1
Essential cutting kit – 851479 (15-30 A)	Hand	420116 (Standard shield)	420114	420118 (Standard)	420117 (FineCut)	420120	420211
		420115 (FineCut deflector)		Combination kit 428243 <sup>1</sup>			



<sup>1</sup>Kit contains 2 standard nozzles (420118) and 2 electrodes (420120)



Minimum order quantity		1	1	5	5	1	
Consumable type	Torch type	Shield/deflector	Retaining cap	Nozzle		Electrode	Swirl ring
FineCut (15-30 A)	Hand	420115	420114	420117		420120	420211
Quantity in kit				Combination kit 428244 <sup>2</sup>			

<sup>2</sup>Kit contains 2 FineCut nozzles (420117) and 2 electrodes (420120)



Minimum order quantity		1	1	1	1	
Consumable type	Torch type	Retaining cap		Nozzle	Electrode	Swirl ring
HyAccess drag-cutting (15-30 A)	Hand	420148		420144	420137	420211
HyAccess gouging (15-30 A)				420147		
Quantity in kit		1	1	1	2	1
HyAccess kit – 428337 (15-30 A)	Hand	420148		420144 (cutting)	420137	420211
		HyAccess cutting only starter pack – 428443 <sup>3</sup>		420147 (gouging)		
		HyAccess gouging only starter pack – 428444 <sup>4</sup>				



<sup>3</sup>Starter pack contains 1 retaining cap (420148), 1 cutting nozzle (420144) and 1 electrode (420137)

<sup>4</sup>Starter pack contains 1 retaining cap (420148), 1 gouging nozzle (420147) and 1 electrode (420137)



See pages 64-65 for current system part number information.

# Duramax® LT hand torch parts

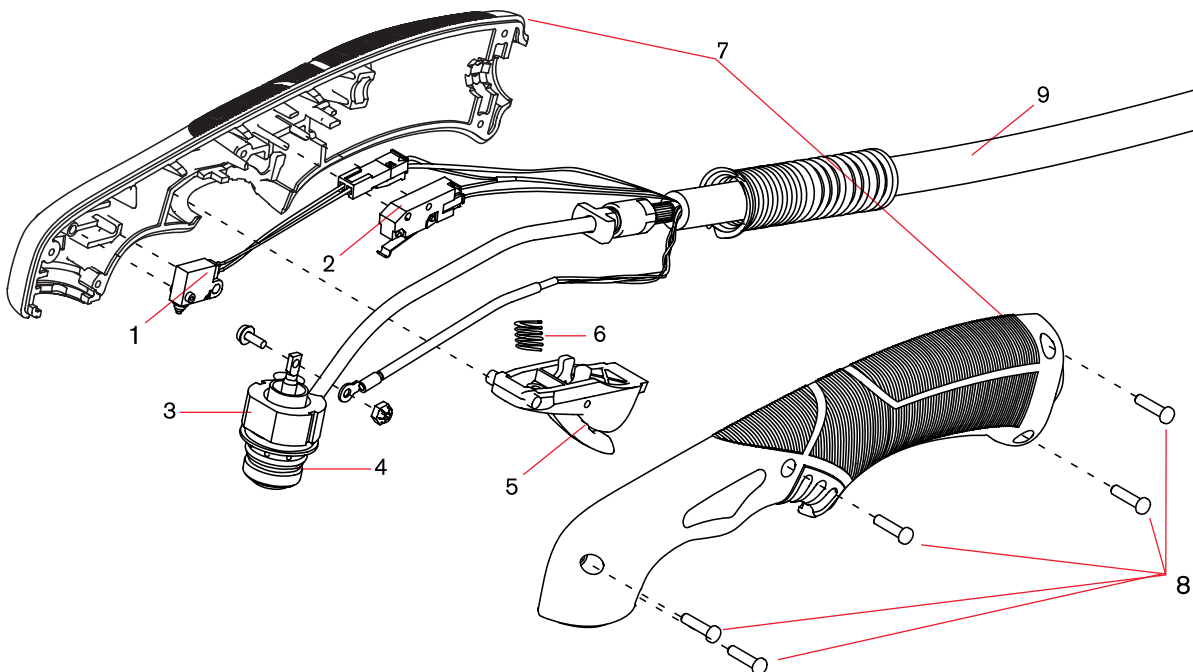
For use with the Powermax30® XP



## Duramax LT hand torch parts

You can replace the entire hand torch and lead assembly, or you can replace individual torch components.

Item	Kit/Part number	Description
	428174	Kit: Duramax LT hand torch assembly with 4.6 m (15') lead. The torch assembly includes one set of general-purpose (standard) consumables: electrode (420120), swirl ring (420211), retaining cap (420114), nozzle (420118), shield (420116)
1	228109	Kit: Torch cap-sensor switch
2	428162	Kit: Torch start switch
3	428178	Kit: Duramax LT torch body (includes o-ring)
4	428179	Kit: Replacement o-rings for torch body
5	428156	Kit: Torch trigger and spring
6	428182	Kit: Replacement springs for torch trigger
7	428177	Kit: Duramax LT torch handle (includes handle screws)
8	428181	Kit: Duramax LT torch replacement handle screws
9	428176	Kit: Duramax LT torch lead, 4.6 m (15'), with strain relief



See pages 64–65 for current system part number information.